

# EPGC inFOREmer

Phone: (309) 527-5225  
Fax: (309) 527-5010

August 1, 2019  
Web Site: [www.elpasogolfclub.com](http://www.elpasogolfclub.com)  
Golf Shop email: [golfclub@fairpoint.net](mailto:golfclub@fairpoint.net)  
Lane's email: [golfclubgm@fairpoint.net](mailto:golfclubgm@fairpoint.net)



Are you planning a meeting, luncheon, or party? Save yourself the time and effort of cooking and cleaning. Host your next party: graduation, birthday, office, card, shower, reunion, bachelor, or engagement—here at the El Paso Golf Club.

Please speak with Lane for details.



## Restaurant News

### Wednesday Evening Features

Aug. 7: Meat Loaf  
Aug. 14 & 15: Ribs  
Aug. 21: Stuffed Peppers  
Aug. 28: Pizza

### Friday & Saturday Dinner Features

Aug. 2 & 3: Prime Rib  
Aug. 9 & 10: Coconut Shrimp  
Aug. 16 & 17: Ribs  
Aug. 23 & 24: Shishkebab (Chicken or Beef)  
Aug. 30 & 31: Chicken or Beef Oscar

Thursday, August 22: Steak Fry

### August Events

Friday, Aug. 2: CPCU, 11:30 shotgun start, 100 golfers approx.  
Monday, Aug. 5: Bill Wolf Outing, 12:00 shotgun, 84-92 golfers  
Tuesday, Aug. 6: "Ladies of the Evening" Play Night, 5:30pm shotgun on front 9, 60 golfers approx.  
Friday, Aug. 16: SunAg, 12:30 shotgun, 40-52 golfers.  
Monday, Aug. 19: IL. Truckers Assoc., 12:00 shotgun, 60 golfers  
Thursday, Aug. 22: Steak Fry  
Sunday, Aug. 25: CLUB PLAY DAY, Club Championship matches in the morning (regular & consolation flights), 1:00pm 4 player scramble (dinner after the scramble).  
Wednesday, Aug. 28: Country Companies, 10:00am shotgun, 100 golfers  
Monday, Sept. 2: Labor Day ALL Club Derby

### **EPG High School Home Golf Matches**

8/21 Girls vs GCMS 4:00	9/3 Girls vs Blue Ridge & Eureka 4:00
8/26 Girls vs Dwight 4:00	9/4 Boys vs Eureka & Tremont 4:00
8/26 Boys vs Dwight 4:00	
8/28 Boys vs. GCMS 4:00	

# Club Championship Sign Up

You must sign up by Tuesday, July 31, 2018

Flighted by handicap as of Wednesday, August 1

(pairings will be ready in the afternoon)

Get your scores posted by the July 31st to have a current handicap.

All Flight Finalists **MUST** play on Sunday, August 25th.

**DO NOT** make it difficult on your opponent when scheduling matches!!!

**PLEASE BE FLEXIBLE!!!**

Last years flight winners will be the #8 seed in the next flight up.

All Men's & Women's flights will have a consolation bracket.

**Summer rules are in effect for all matches except where marked!**

Championship flight play matches from the **BLACK** tees.

A - flight play matches from the **PURPLE** tees.

C - flight play matches from the **WHITE** tees.

Women play matches from the **RED** tees.

## MATCH DATES:

### MEN (16 players per flight)

1st round > Aug. 1-11

2nd round > Aug. 12-18

3rd round > Aug. 19-24

Sunday, Aug. 25 > Finals 8:00-10:00

### WOMEN (8 players per flight)

1st round > Aug. 1-11

2nd round > Aug. 12-24

Sunday, Aug. 25 > Finals 8:00-10:00

## CLUB PLAY DAY

Sunday, Aug. 25, 2019

Club Championship Matches in the morning.

Matches start at 8:00am.

1:00pm 4 player scramble (dinner after the scramble)

# Couples Best Position QUALIFYING

Aug. 16-24, 26-31, Sept. 1-2, 2019

Entry Fee: \$20.00 per couple

8 couples per flight

1st & 2nd place only in each flight will be paid out.

PLEASE observe all match deadlines

## MATCH DATES

1st round > Sept. 3-22

2nd round > Sept. 23-Oct. 12

Finals > Sunday, Oct. 13 (9:04-9:52)

\*\*\*\*\*

## Labor Day ALL Club Derby

Monday, Sept. 2, 2019

This event is an all club derby. The derby consists of 10-12 golfers all teeing off on hole #1 and the golfer with the highest score on that hole dropping out. Ties are broken with a chip off from a pre-determined spot. This same procedure is continued on each hole for the rest of the front nine until 2-4 golfers are left on hole #9. There will be Men's & Ladies Derby's which are flighted by handicaps as of Sept. 1, 2019. The highest handicapped derby's will start teeing off at 11:00am, followed by the lower handicapped derby's. Each group tees off in approx. 20 minutes intervals.

Entry Fee is \$10.00 per player when signing up. EPGC Gift Cards will be returned for 1st, 2nd, 3rd, 4th place in each derby. This is a really FUN event.

Sign up NOW in the Golf Shop by paying the \$10.00 entry fee no later then Sunday, Sept. 1.

Regular golf on Labor Day is tee times from 6:00am > 10:48am & 3:20pm > 6:00pm

EPGC members should call or go online to make tee times.

**EPGC inFOREmer**

El Paso Golf Club, Inc.  
2860 County Road 600 N  
El Paso, IL. 61738-1743

Address Service Requested

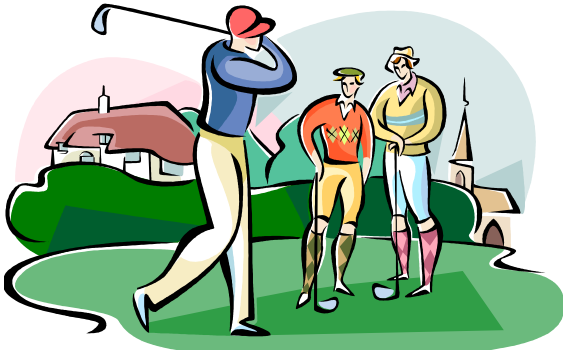
PRESORTED STANDARD

U.S. POSTAGE

**PAID**

PERMIT NO. 58

EL PASO, IL.



**Friendly Golfers Play Here**

## Upcoming Member Events



Tuesday, Aug. 6: "Ladies of the Evening" Play Night

Aug. 16-24, 26-31, Sept. 1-2: Couples Best Position QUALIFYING

Sunday, Aug. 25: CLUB PLAY DAY (club championship finals matches at 8:00), 1:00pm 4 player scramble

Monday, Sept. 2: Labor Day ALL Club Derby